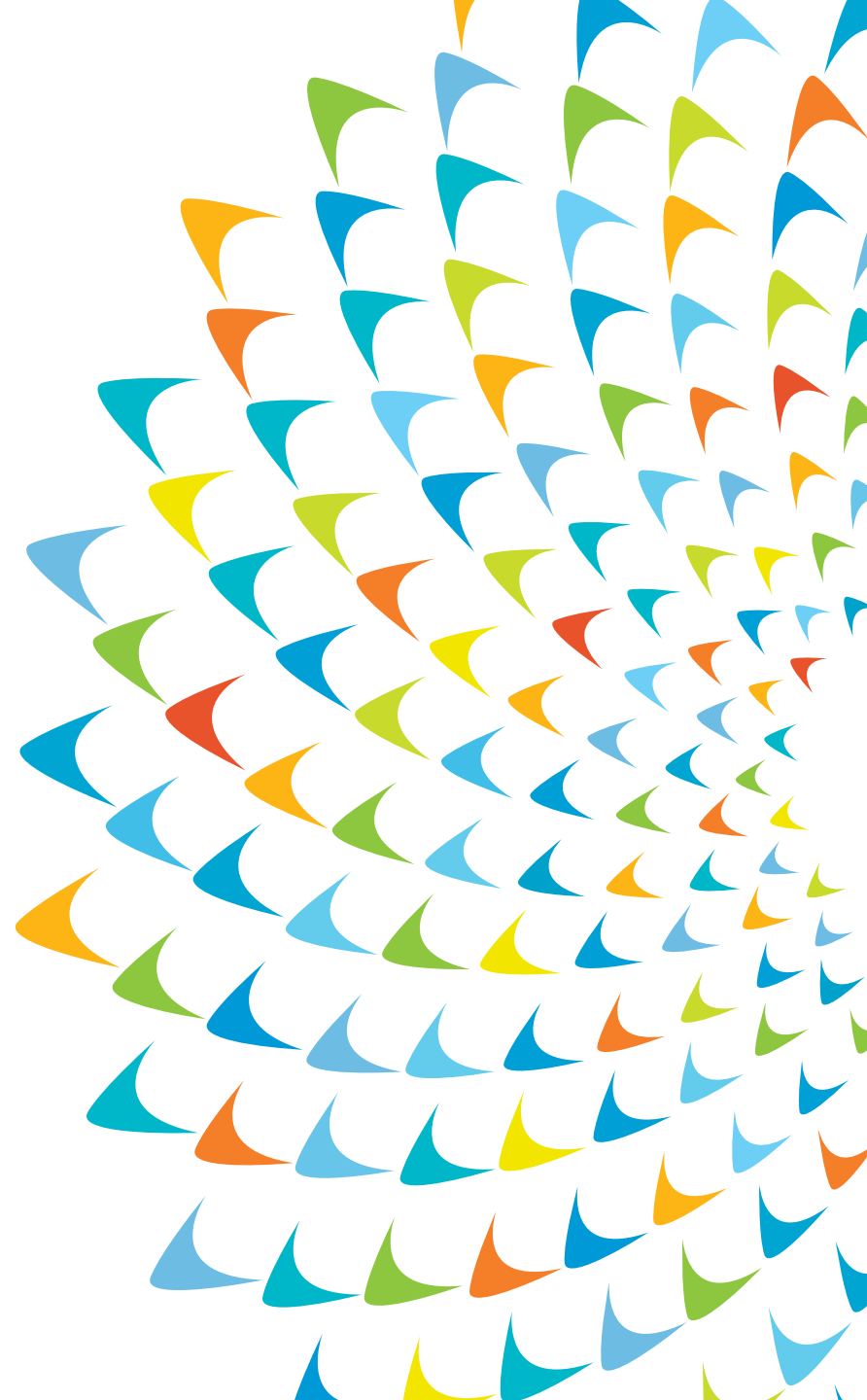
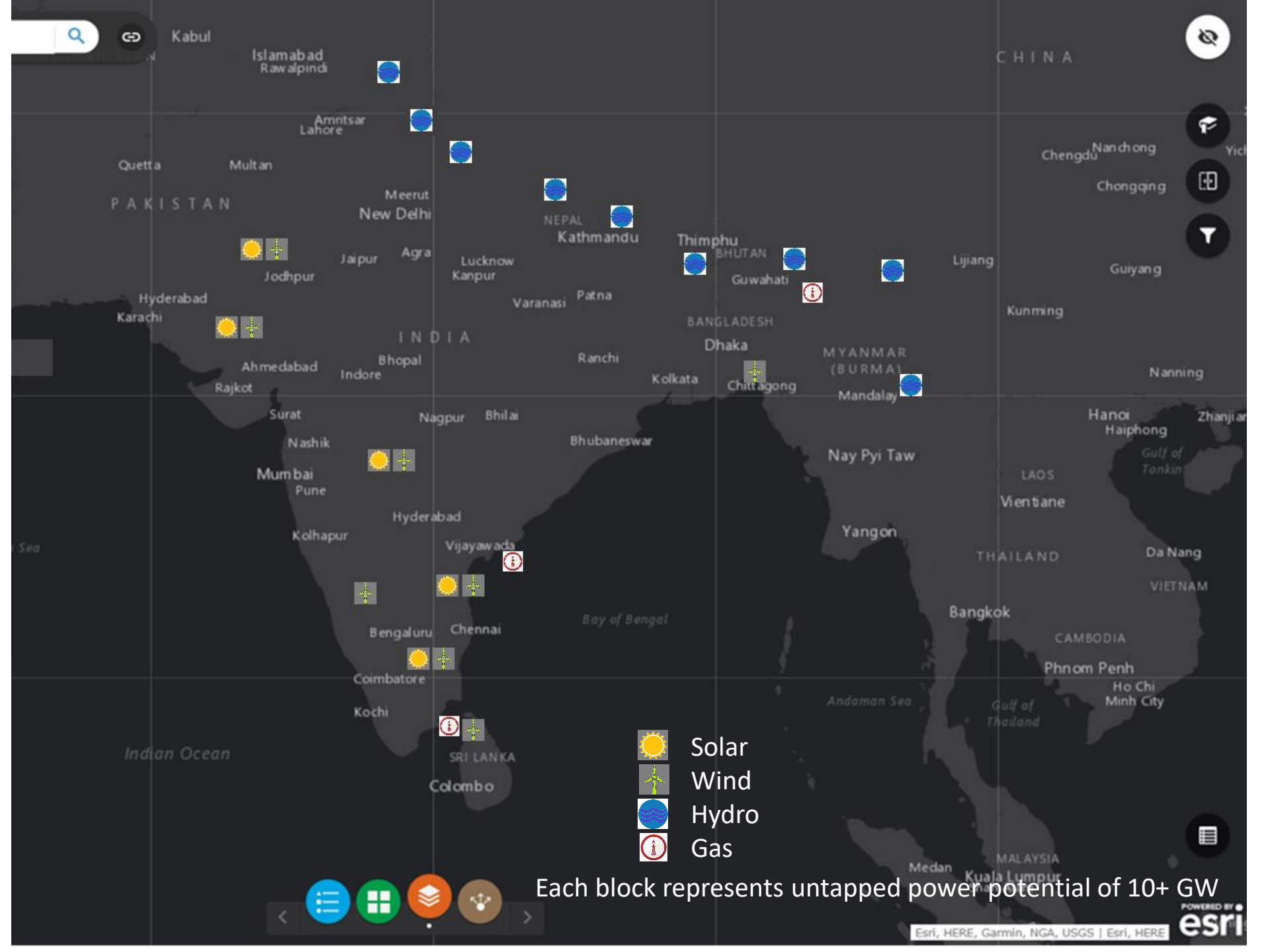




# **3<sup>rd</sup> ETTF**

- ADB Experience Sharing





Each block represents untapped power potential of 10+ GW



# SASEC Energy Sector

**Improve interconnections to access large-scale electricity and natural gas sources**

**Harness unused regional indigenous hydropower potential**

**Develop low-carbon alternatives including wind and solar**

**Facilitate bilateral and regional coordination mechanisms and knowledge sharing**

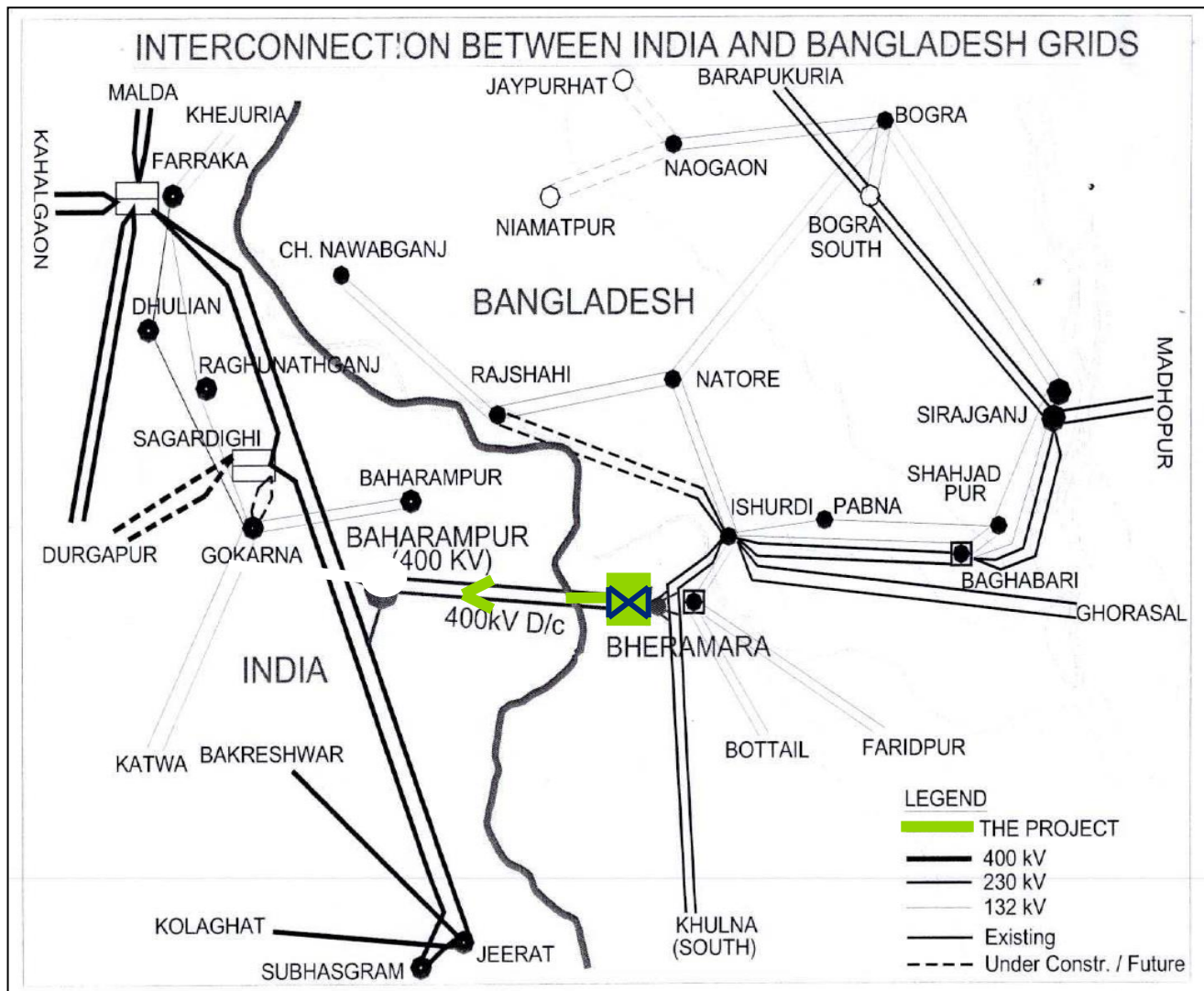


[Publications List | South Asia Subregional Economic Cooperation \(sasec.asia\)](#)





# South Asia's First Grid to Grid Connection



[ADB to Help Scale Up India-Bangladesh Cross-Border Power Exchanges | Asian Development Bank](#)

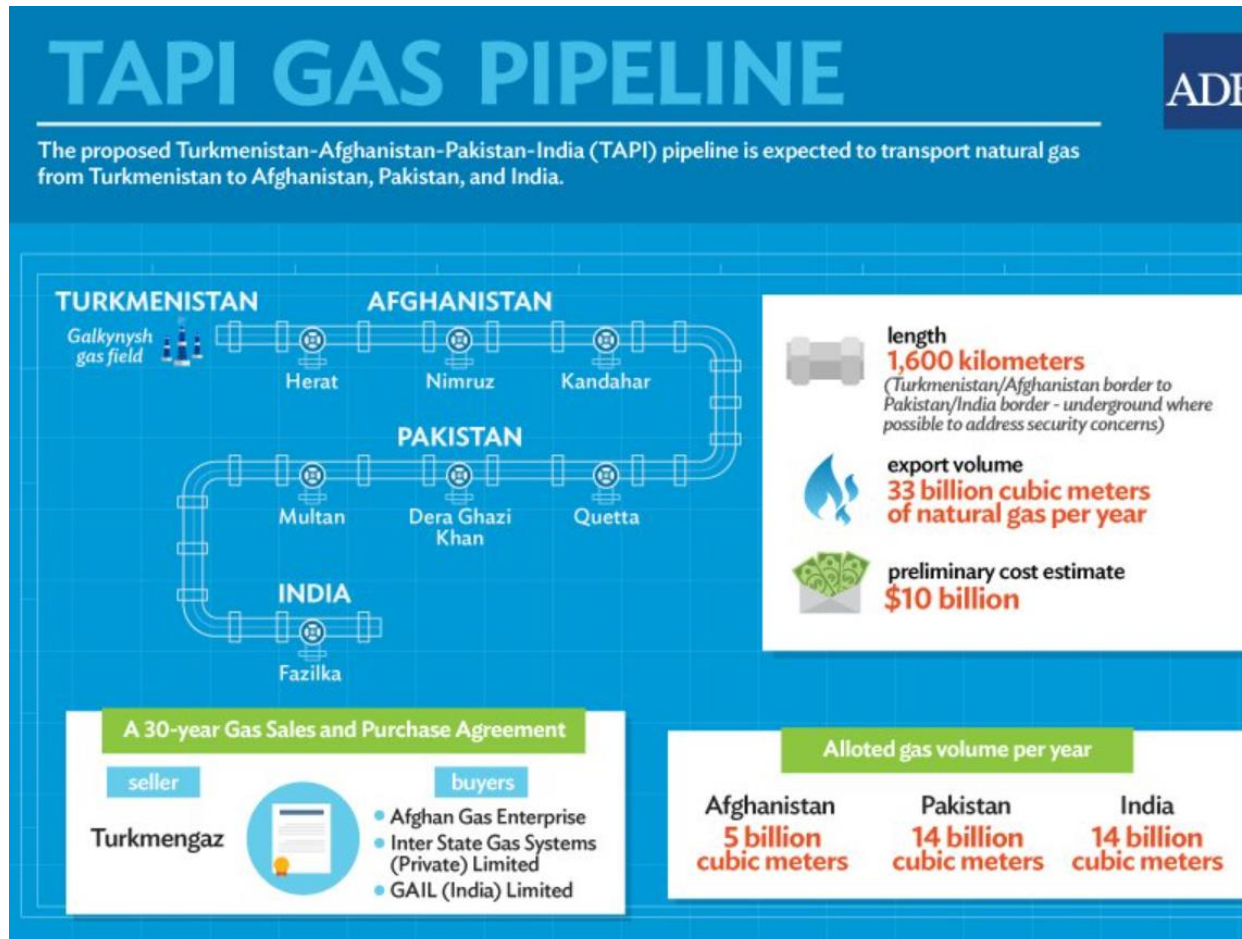
INTERNAL. This information is accessible to ADB Management and staff. It may be shared outside ADB with appropriate permission.







# Multi country pipelines



[TAPI Gas Pipeline | Asian Development Bank \(adb.org\)](https://www.adb.org)





Thank you.

